



Interim Performance Report

In March 2009, the Kentucky General Assembly passed Senate Bill 1 (SB1) that was subsequently signed into law by the Governor. SB1 calls for a significant overhaul of the state's assessment and accountability system. The new assessment system begins in the spring of 2012. The school years of 2008-2009, 2009-2010 and 2010-2011 are described in SB1 as an interim period. This three-year period allows Kentucky to develop the new assessment system and to carry on state and federal testing requirements.

The Interim Performance Report includes the Kentucky Core Content Test (KCCT) in Reading (grades 3-8 and 10), Mathematics (grades 3-8 and 11), Science (grades 4, 7 and 11), Social Studies (grades 5, 8 and 11) and Writing On-Demand (grades 5, 8 and 12). The KCCT is based on the Kentucky Core Content for Assessment (Version 4.1) and contains multiple choice and open response questions. The Writing On-Demand test uses writing prompts that require students to craft a piece of writing in a 60 minute period.

The KCCT is developed under the direction of content advisory committees of Kentucky educators who draft, review and select test questions. All test items are reviewed by a bias review committee to enhance the fairness of items for all Kentucky students.

The KCCT continues to fulfill the requirements of the federal statute known as the No Child Left Behind Act of 2001. A separate accountability report for No Child Left Behind (NCLB) is published by the Kentucky Department of Education.

The Interim Performance Report focuses entirely on the five state-required content areas and provides data for schools or districts. The data in this report is not used directly for state accountability; although, these results can fulfill the requirements of Senate Bill 168 from 2002 and may be used by schools or districts for their own local accountability needs.

Performance standards are based on descriptions of Novice, Apprentice, Proficient and Distinguished (NAPD) student performance levels specific to the content area and grade being assessed. The performance standards, in conjunction with Kentucky's Core Content for Assessment, should allow instruction to better focus on the content area to be taught and on how well students must demonstrate achievement in each content area.

Reporting Changes for 2009

Based on SB1, Kentucky will not be reporting state accountability and academic indices as in the past. The report does have several familiar pages with performance level (NAPD) trend, core content and disaggregation data per content area. Districts and schools will still see distributions of how students scored in the Novice (with sublevels), Apprentice (with sublevels), Proficient and Distinguished performance levels.

Confidentiality Changes

Due to federal regulations around the Family Education Rights and Privacy Act (FERPA), the numbers of students have been removed. Though there is a need to report as much data as possible, there is also a paramount need to maintain the confidential aspects of individual scores. When scores are reported in what is commonly called "small cells" where very few students may be categorized, there is the possibility of revealing individual scores when numbers are reported. Numbers are reported to each district in a confidential report that accompanies the public Interim Performance Report.

2008-2009

INTERIM PERFORMANCE REPORT

School: Lincoln County Middle School

District: Lincoln County

Code: 341065

Grade: 06-08

CONTENTS OF THIS REPORT

Introduction	1
Academic Trend Data	
Reading Results	2-8
Mathematics Results	9-15
Science Results	16-18
Social Studies Results	19-21
Writing Results	22-24

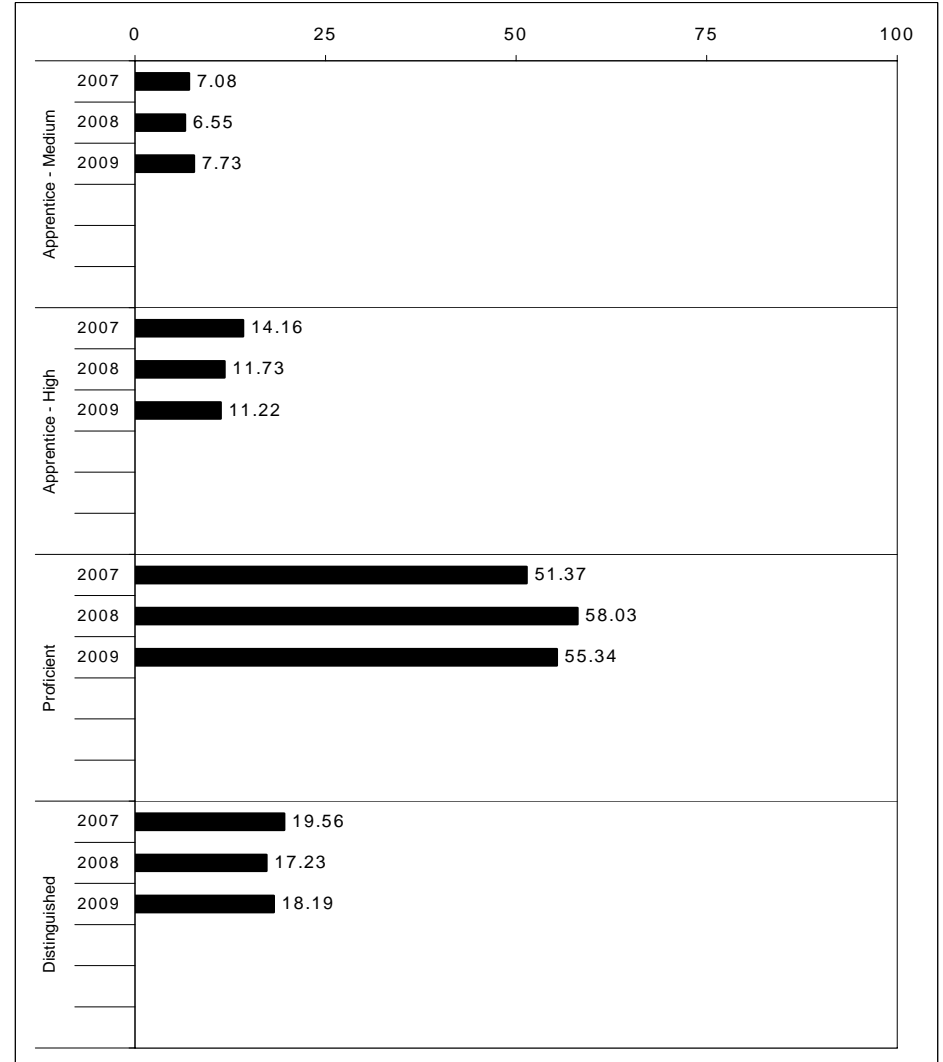
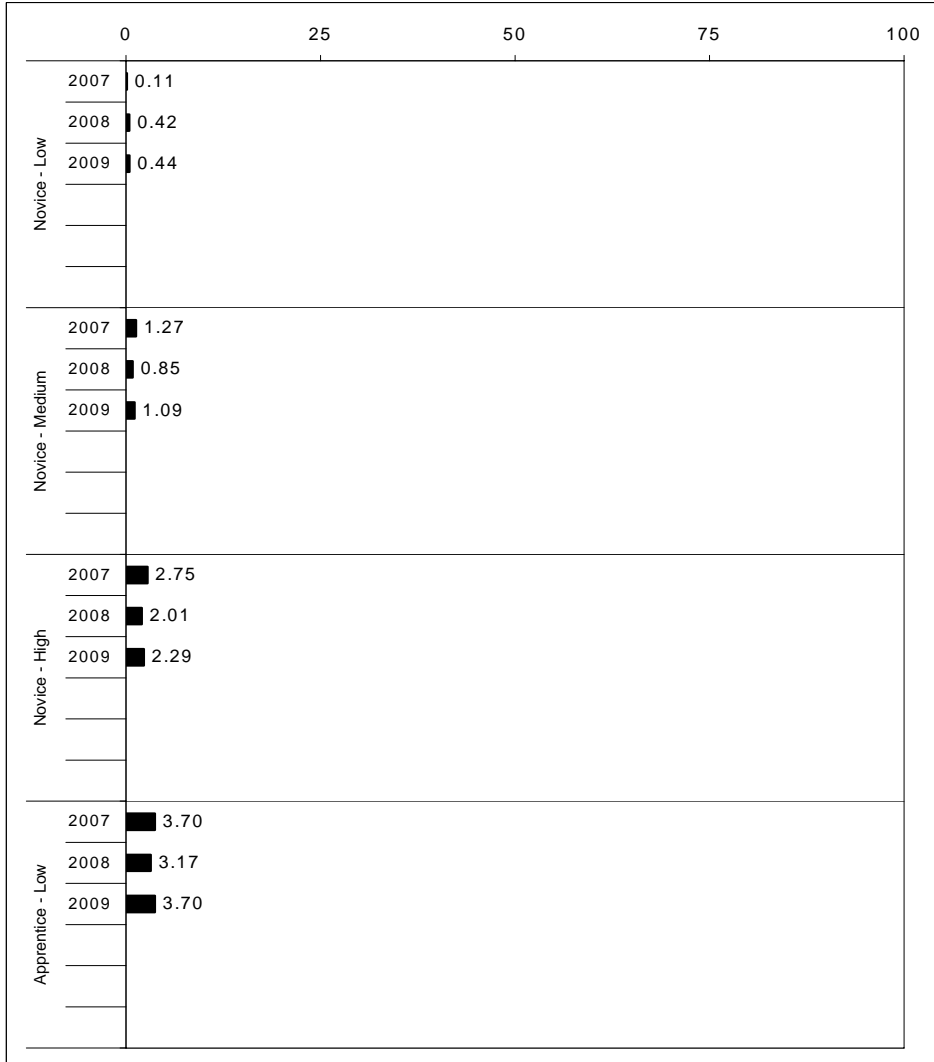
For more information, refer to the 2009 Interim Assessment Interpretative Guide on the Kentucky Department of Education Web site (www.education.ky.gov).





2008-2009
INTERIM PERFORMANCE REPORT
READING TREND DATA
Performance Level Percents

School: Lincoln County Middle School
 District: Lincoln County
 Code: 341065
 Grade: MIDDLE



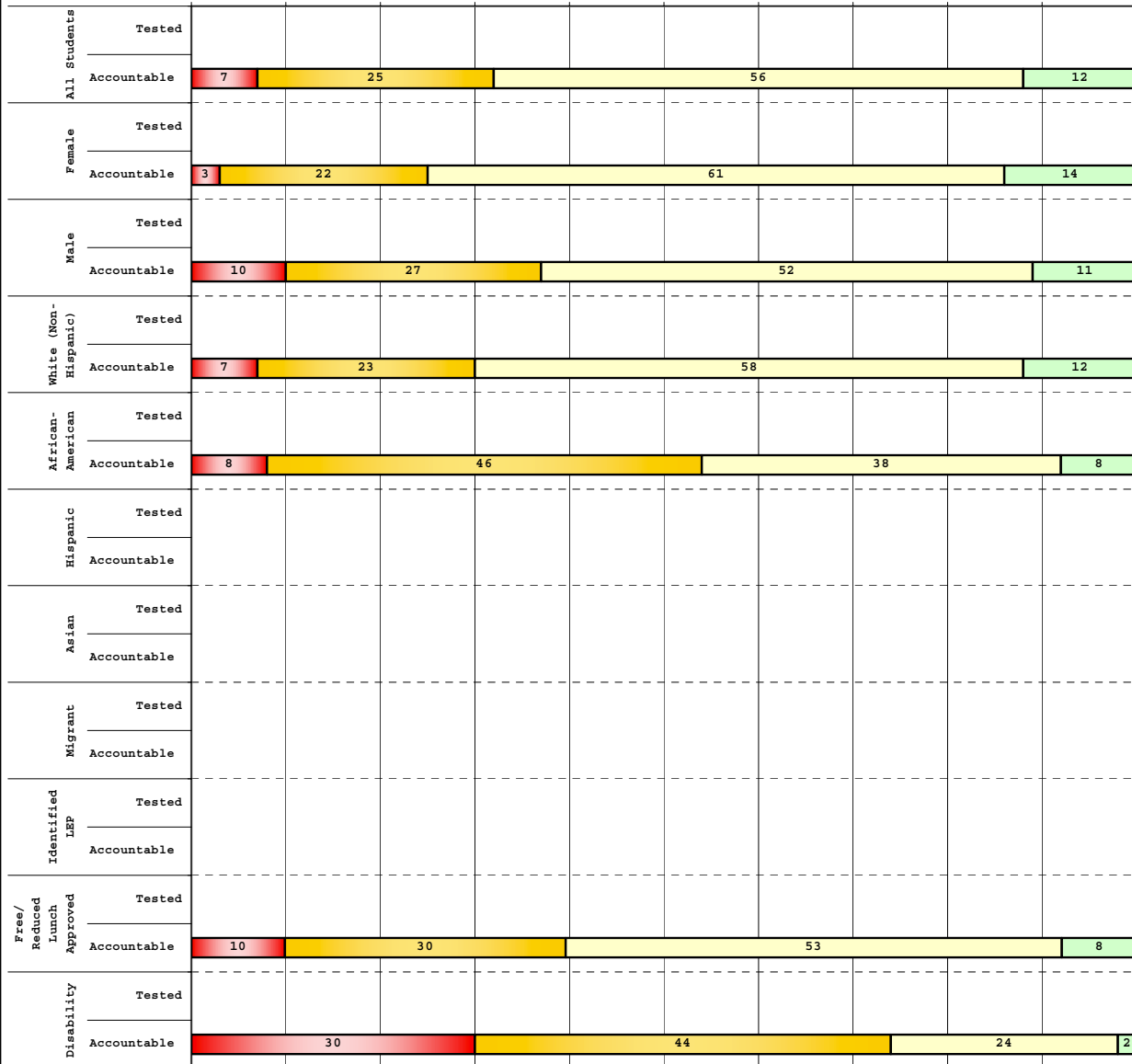
The horizontal bar represents the percent of students scoring at a performance level within a particular year. Percentages may not sum to 100% due to rounding.



2008-2009
INTERIM PERFORMANCE REPORT
READING DISAGGREGATION
Performance Level Percents

School: Lincoln County Middle School
 District: Lincoln County
 Code: 341065
 Grade: 06

0% 10% 20% 30% 40% 50% 60% 70% 80% 90% 100%



Tested Students

	N%	A%	P%	D%	P+D%
Total					
Female					
Male					
White (Non-Hispanic)					
African-American					
Hispanic					
Asian					
Other					
Title I					
Migrant					
Identified LEP					
Extended Sch Services					
Gifted/Talented					
F/R Lunch Approved					
Vocational/2 Credits					
Disability					
Alternate Assessment					
NCLB Accountable Students					
Total	7	25	56	12	68.51
Female	3	22	61	14	74.83
Male	10	27	52	11	62.73
White (Non-Hispanic)	7	23	58	12	69.58
African-American	8	46	38	8	46.15
Hispanic	Unreportable*				
Asian	Unreportable*				
Other	Unreportable*				
Title I	Unreportable*				
Migrant	Unreportable*				
Identified LEP					
Extended Sch Services	22	33	46	0	45.65
Gifted/Talented	0	4	50	46	96.15
F/R Lunch Approved	10	30	53	8	60.68
Vocational/2 Credits					
Disability	30	44	24	2	26.00
Alternate Assessment	Unreportable*				

■ Novice
■ Apprentice
■ Proficient
■ Distinguished

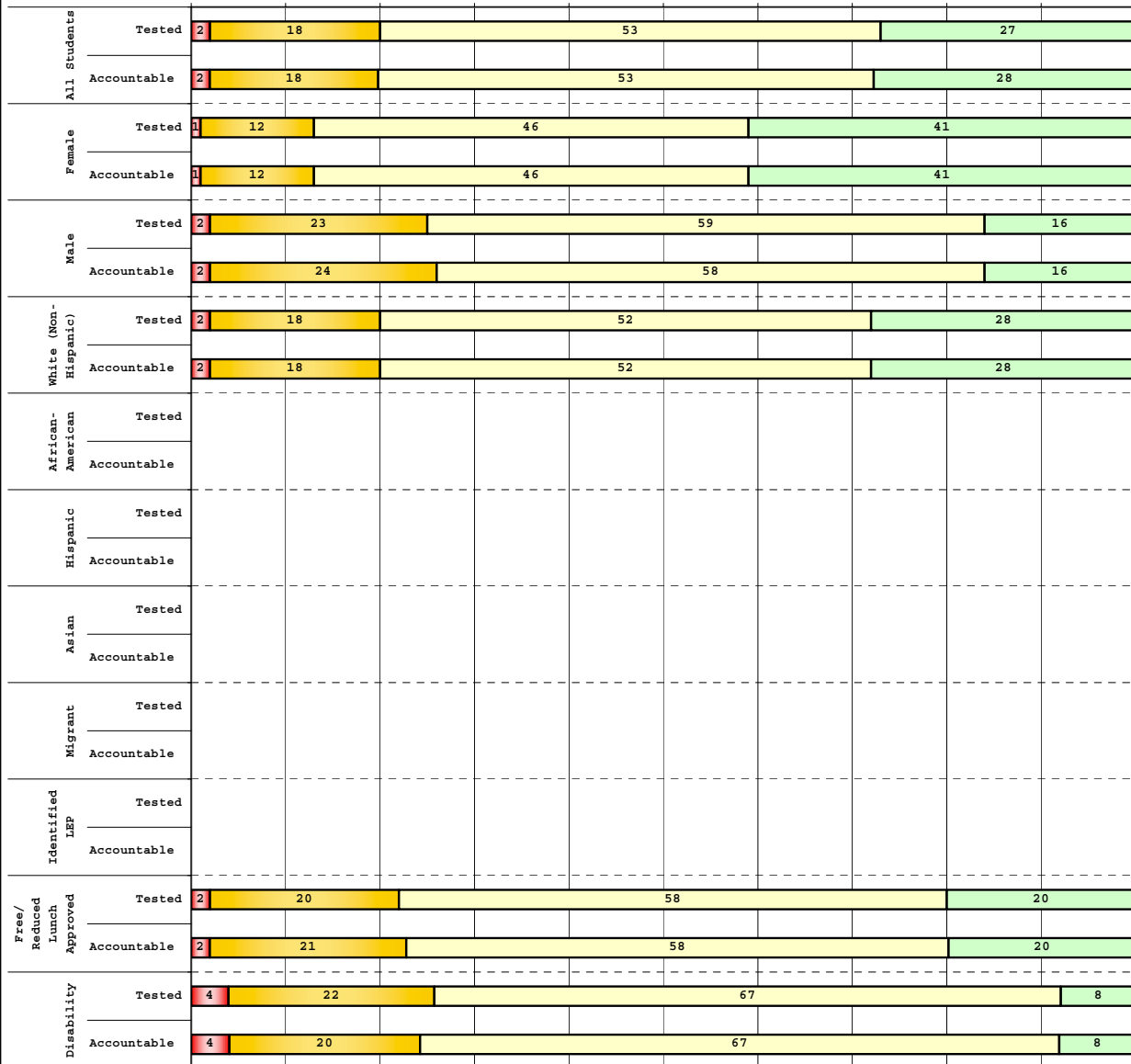
Percentage may not sum to 100% due to rounding. 'Unreportable*' indicates subpopulations with fewer than 10 students or subpopulations where all students score at the same performance level.



**2008-2009
INTERIM PERFORMANCE REPORT
READING DISAGGREGATION
Performance Level Percents**

School: Lincoln County Middle School
District: Lincoln County
Code: 341065
Grade: 07

0% 10% 20% 30% 40% 50% 60% 70% 80% 90% 100%



	N%	A%	P%	D%	P+D%
Tested Students					
Total	2	18	53	27	80.34
Female	1	12	46	41	86.86
Male	2	23	59	16	74.68
White (Non-Hispanic)	2	18	52	28	80.14
African-American	Unreportable*				
Hispanic	Unreportable*				
Asian					
Other	Unreportable*				
Title I					
Migrant					
Identified LEP	Unreportable*				
Extended Sch Services	Unreportable*				
Gifted/Talented	0	5	35	61	95.45
F/R Lunch Approved	2	20	58	20	77.78
Vocational/2 Credits					
Disability	4	22	67	8	74.51
Alternate Assessment	Unreportable*				
NCLB Accountable Students					
Total	2	18	53	28	80.27
Female	1	12	46	41	86.96
Male	2	24	58	16	74.36
White (Non-Hispanic)	2	18	52	28	80.43
African-American	Unreportable*				
Hispanic	Unreportable*				
Asian					
Other	Unreportable*				
Title I					
Migrant					
Identified LEP	Unreportable*				
Extended Sch Services	Unreportable*				
Gifted/Talented	0	5	35	61	95.45
F/R Lunch Approved	2	21	58	20	77.65
Vocational/2 Credits					
Disability	4	20	67	8	75.51
Alternate Assessment	Unreportable*				

■ Novice
■ Apprentice
■ Proficient
■ Distinguished

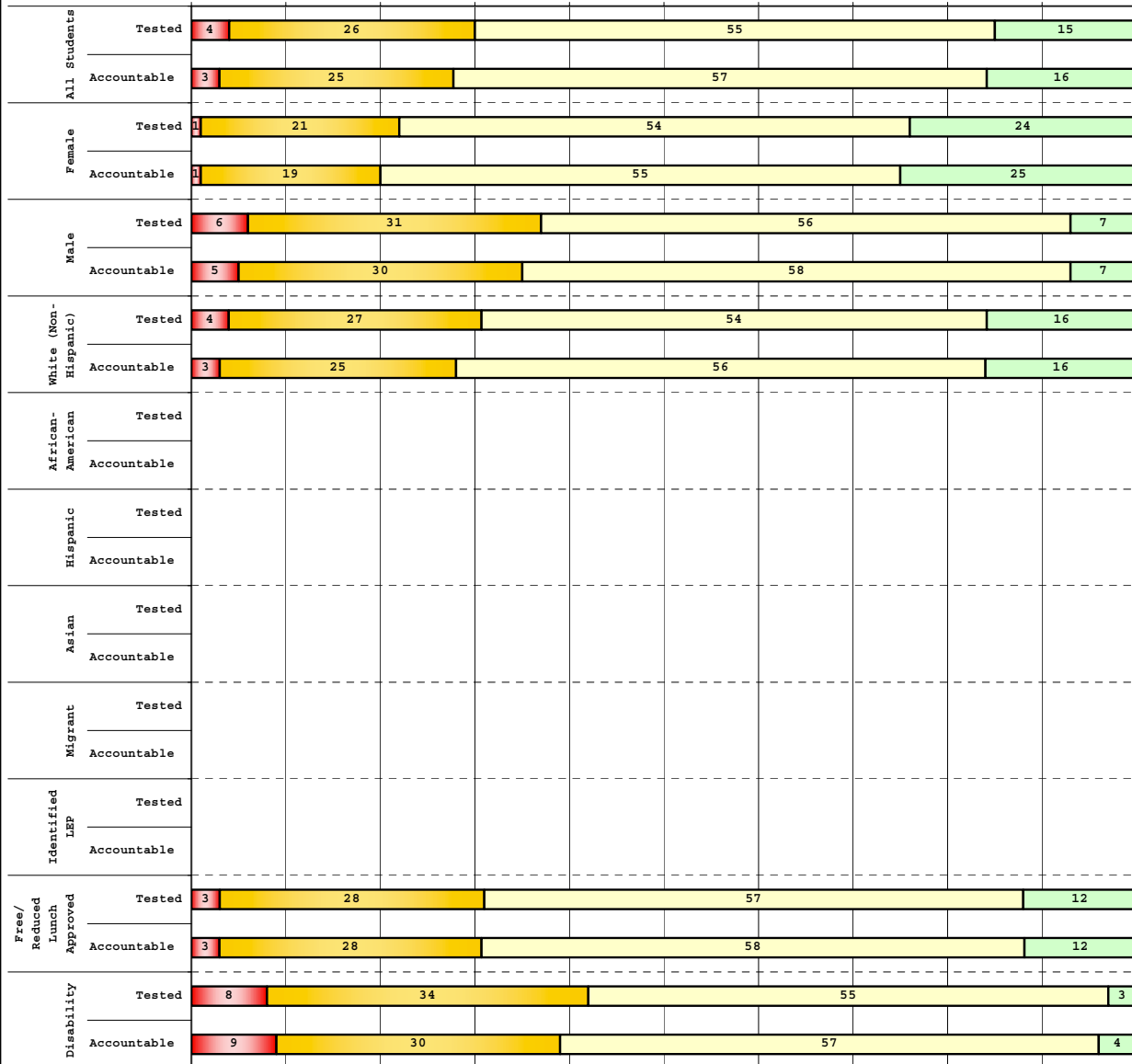
Percentage may not sum to 100% due to rounding. 'Unreportable*' indicates subpopulations with fewer than 10 students or subpopulations where all students score at the same performance level.



**2008-2009
INTERIM PERFORMANCE REPORT
READING DISAGGREGATION
Performance Level Percents**

School: Lincoln County Middle School
District: Lincoln County
Code: 341065
Grade: 08

0% 10% 20% 30% 40% 50% 60% 70% 80% 90% 100%

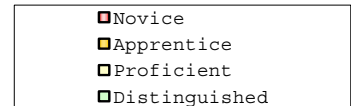


Tested Students

	N%	A%	P%	D%	P+D%
Total	4	26	55	15	70.31
Female	1	21	54	24	78.21
Male	6	31	56	7	62.80
White (Non-Hispanic)	4	27	54	16	69.48
African-American	Unreportable*				
Hispanic	Unreportable*				
Asian					
Other	Unreportable*				
Title I					
Migrant	Unreportable*				
Identified LEP	Unreportable*				
Extended Sch Services	Unreportable*				
Gifted/Talented	0	3	61	36	96.97
F/R Lunch Approved	3	28	57	12	69.15
Vocational/2 Credits					
Disability	8	34	55	3	58.06
Alternate Assessment	Unreportable*				

NCLB Accountable Students

	N%	A%	P%	D%	P+D%
Total	3	25	57	16	72.15
Female	1	19	55	25	79.87
Male	5	30	58	7	64.81
White (Non-Hispanic)	3	25	56	16	71.52
African-American	Unreportable*				
Hispanic	Unreportable*				
Asian					
Other	Unreportable*				
Title I					
Migrant	Unreportable*				
Identified LEP	Unreportable*				
Extended Sch Services	Unreportable*				
Gifted/Talented	0	3	61	36	96.97
F/R Lunch Approved	3	28	58	12	69.50
Vocational/2 Credits					
Disability	9	30	57	4	60.71
Alternate Assessment	Unreportable*				



Percentage may not sum to 100% due to rounding. 'Unreportable*' indicates subpopulations with fewer than 10 students or subpopulations where all students score at the same performance level.



2008-2009
INTERIM PERFORMANCE REPORT
READING CORE CONTENT

School: Lincoln County Middle School
 District: Lincoln County
 Code: 341065
 Grade: 06

	No. Items	No. Observations	SCHOOL							Mean	Std. Err.	No. Observations	STATE							Mean	School -State Mean
			B	0	1	2	3	4	B				0	1	2	3	4				
OPEN RESPONSE																					
2.0.x - Developing Understanding	8	918	0	5	20	54	17	3	1.9	0.0	143,077	0	5	21	48	19	6	2.0	-0.1		
3.0.x - Interpreting Text	4	468	0	6	24	50	17	3	1.9	0.0	71,732	0	5	22	47	20	6	2.0	-0.1		
MULTIPLE CHOICE																					
1.0.x - Forming a Foundation	20	1,523	75	25	1				0.75	0.01	238,026	76	24	0				0.76	-0.01		
2.0.x - Developing Understanding	80	5,337	77	23	0				0.77	0.01	834,491	78	22	0				0.78	-0.01		
3.0.x - Interpreting Text	27	2,414	72	28	0				0.72	0.01	374,191	71	29	0				0.71	0.01		
5.0.x - Critical Stance	15	1,280	72	28	0				0.72	0.01	198,813	70	30	0				0.70	0.02		



2008-2009
INTERIM PERFORMANCE REPORT
READING CORE CONTENT

School: Lincoln County Middle School
 District: Lincoln County
 Code: 341065
 Grade: 07

	No. Items	No. Observations	SCHOOL								Std. Err.	No. Observations	STATE								School -State Mean
			B	0	1	2	3	4	Mean	B			0	1	2	3	4	Mean			
OPEN RESPONSE																					
2.0.x - Developing Understanding	6	780	0	2	9	47	27	15	2.4	0.0	128,065	0	4	18	50	20	8	2.1	0.3		
3.0.x - Interpreting Text	7	832	0	2	9	46	29	15	2.5	0.0	136,547	0	4	18	49	21	8	2.1	0.4		
MULTIPLE CHOICE																					
1.0.x - Forming a Foundation	13	1,122	71	29	0				0.70	0.01	185,240	67	33	0				0.67	0.03		
2.0.x - Developing Understanding	82	4,999	83	17	0				0.83	0.01	818,440	78	21	0				0.78	0.05		
3.0.x - Interpreting Text	32	2,279	82	18	0				0.82	0.01	378,496	77	23	0				0.77	0.05		
5.0.x - Critical Stance	21	1,747	83	17	0				0.83	0.01	287,943	76	24	0				0.76	0.07		



**2008-2009
INTERIM PERFORMANCE REPORT
READING CORE CONTENT**

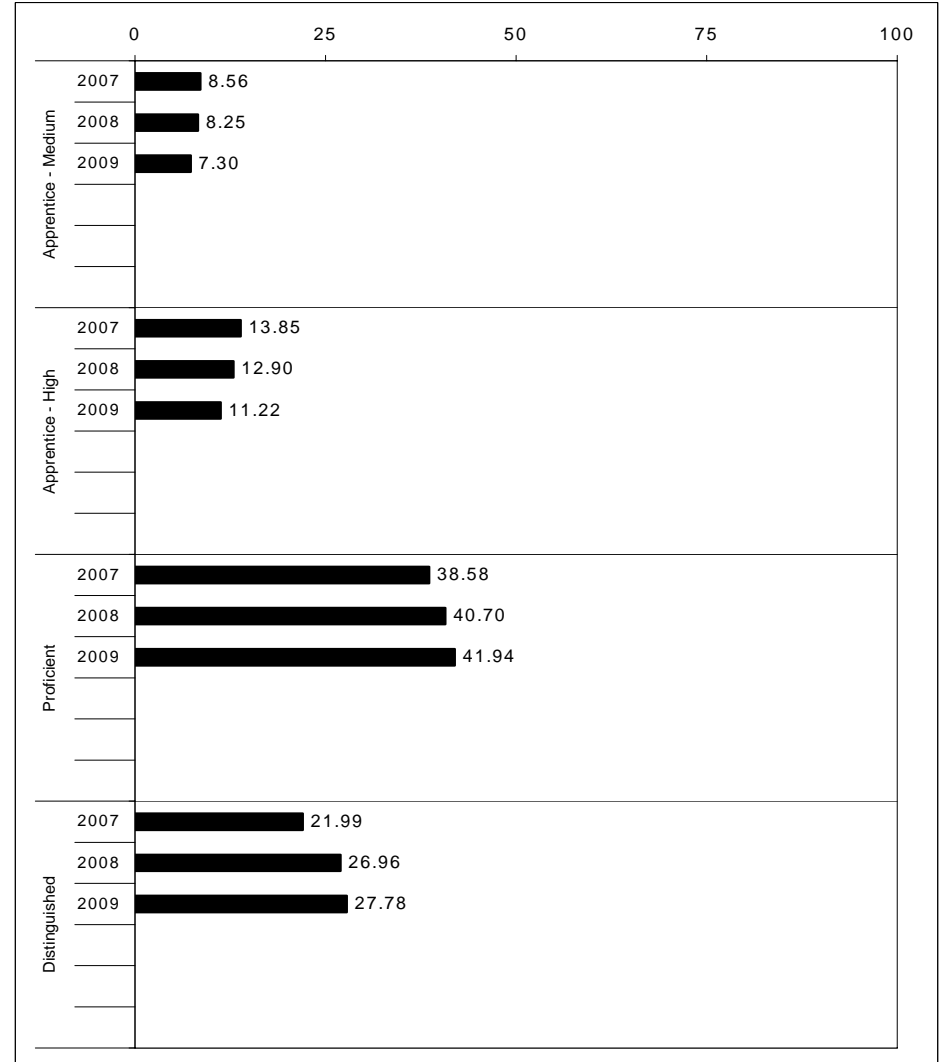
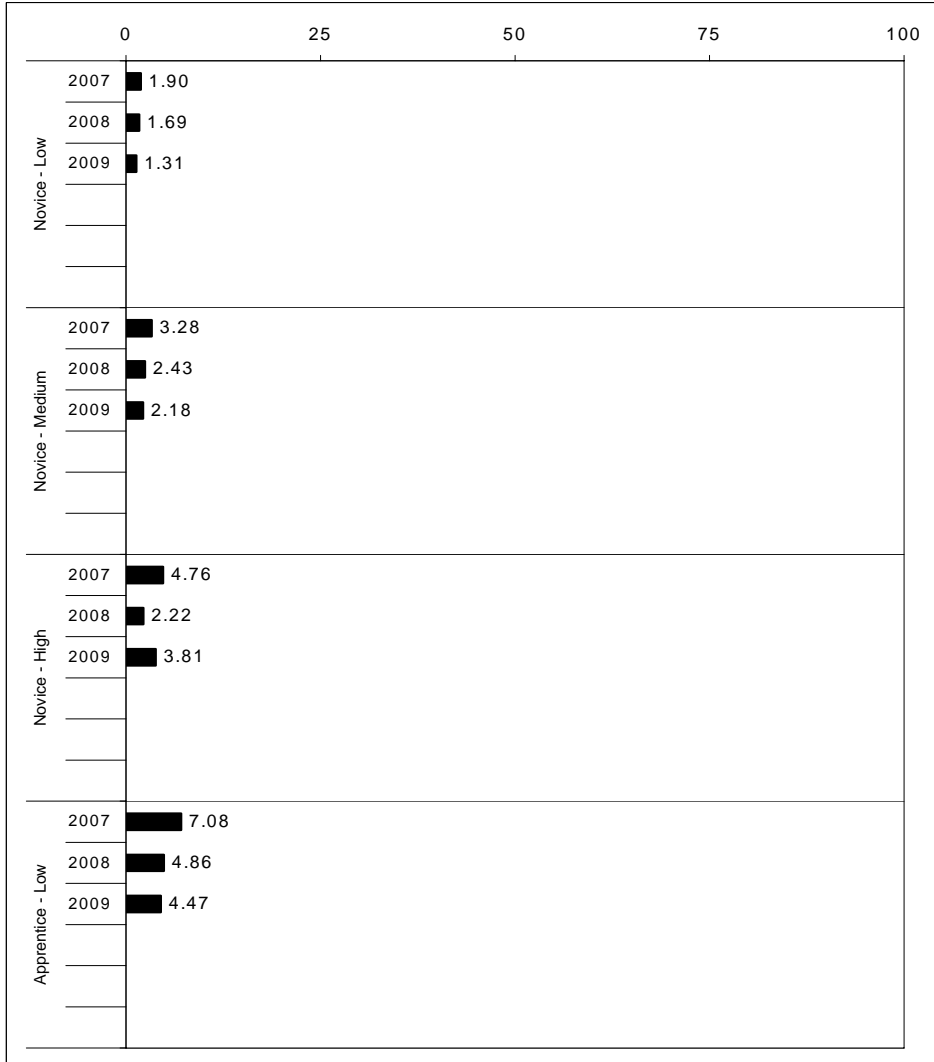
School: Lincoln County Middle School
 District: Lincoln County
 Code: 341065
 Grade: 08

	No. Items	No. Observations	SCHOOL								Std. Err.	No. Observations	STATE								School -State Mean
			B	0	1	2	3	4	Mean	B			0	1	2	3	4	Mean			
OPEN RESPONSE																					
2.0.x - Developing Understanding	2	358	0	2	8	48	30	11	2.4	0.0	57,047	0	2	12	45	32	9	2.3	0.1		
3.0.x - Interpreting Text	6	827	0	2	7	53	30	8	2.4	0.0	129,162	0	3	12	47	31	8	2.3	0.1		
5.0.x - Critical Stance	1	51	0	4	4	55	27	10	2.4	0.2	7,995	0	25	11	39	18	6	1.7	0.7		
MULTIPLE CHOICE																					
1.0.x - Forming a Foundation	16	1,601	78	22	0				0.78	0.01	250,803	79	21	0				0.79	-0.01		
2.0.x - Developing Understanding	76	4,947	77	23	0				0.77	0.01	776,309	74	25	0				0.74	0.03		
3.0.x - Interpreting Text	38	2,972	71	29	0				0.71	0.01	471,469	70	30	0				0.70	0.01		
5.0.x - Critical Stance	19	1,243	71	29	0				0.71	0.01	193,804	65	35	0				0.65	0.06		



2008-2009
INTERIM PERFORMANCE REPORT
MATHEMATICS TREND DATA
Performance Level Percents

School: Lincoln County Middle School
 District: Lincoln County
 Code: 341065
 Grade: MIDDLE



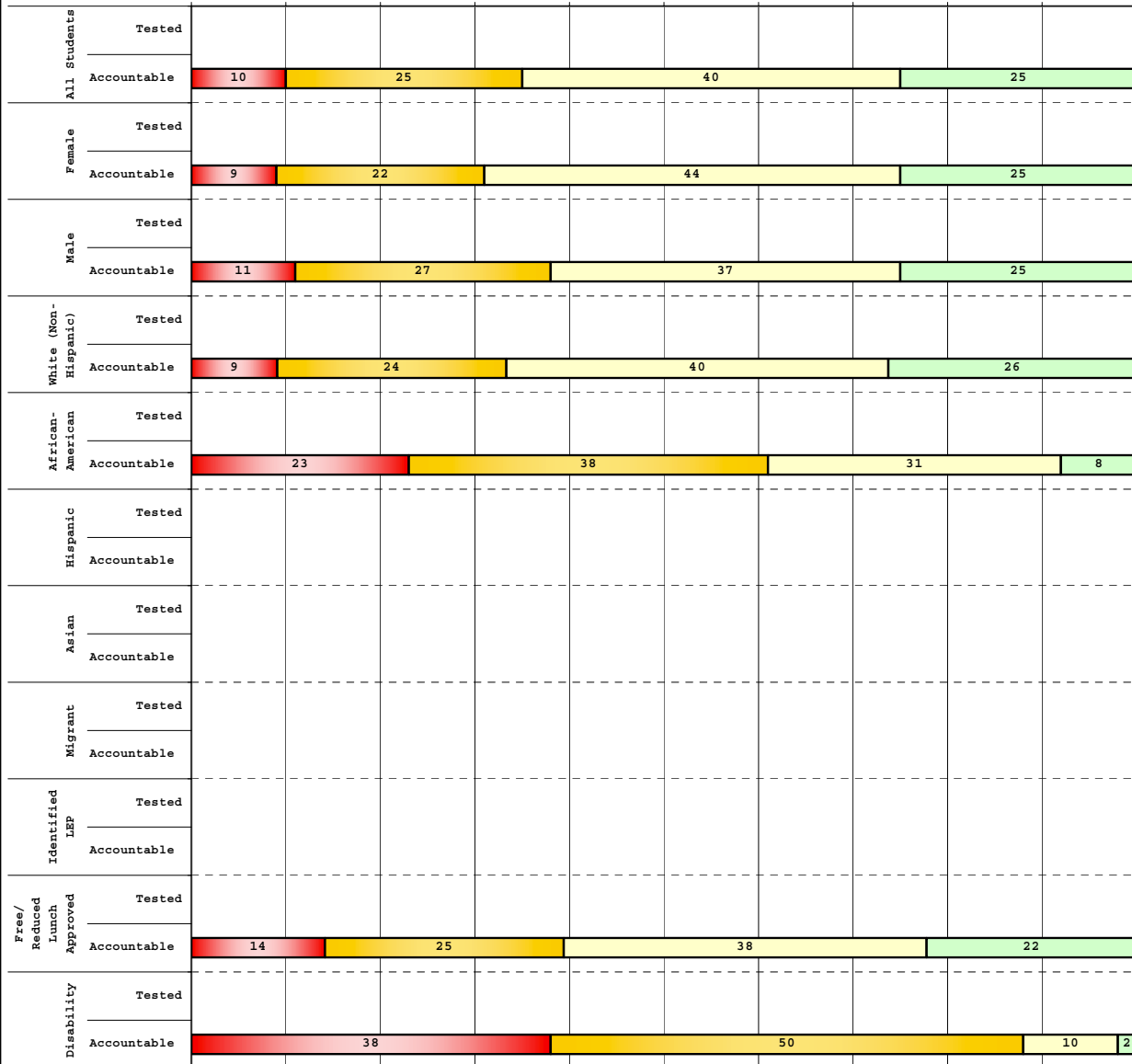
The horizontal bar represents the percent of students scoring at a performance level within a particular year. Percentages may not sum to 100% due to rounding.



**2008-2009
INTERIM PERFORMANCE REPORT
MATHEMATICS DISAGGREGATION
Performance Level Percents**

School: Lincoln County Middle School
 District: Lincoln County
 Code: 341065
 Grade: 06

0% 10% 20% 30% 40% 50% 60% 70% 80% 90% 100%



Tested Students

	N%	A%	P%	D%	P+D%
Total					
Female					
Male					
White (Non-Hispanic)					
African-American					
Hispanic					
Asian					
Other					
Title I					
Migrant					
Identified LEP					
Extended Sch Services					
Gifted/Talented					
F/R Lunch Approved					
Vocational/2 Credits					
Disability					
Alternate Assessment					

NCLB Accountable Students

	N%	A%	P%	D%	P+D%
Total	10	25	40	25	65.26
Female	9	22	44	25	68.71
Male	11	27	37	25	62.11
White (Non-Hispanic)	9	24	40	26	66.43
African-American	23	38	31	8	38.46
Hispanic	Unreportable*				
Asian	Unreportable*				
Other	Unreportable*				
Title I	Unreportable*				
Migrant	Unreportable*				
Identified LEP	Unreportable*				
Extended Sch Services	35	33	33	0	32.61
Gifted/Talented	0	2	21	77	98.08
F/R Lunch Approved	14	25	38	22	60.68
Vocational/2 Credits	Unreportable*				
Disability	38	50	10	2	12.00
Alternate Assessment	Unreportable*				

■	Novice
■	Apprentice
■	Proficient
■	Distinguished

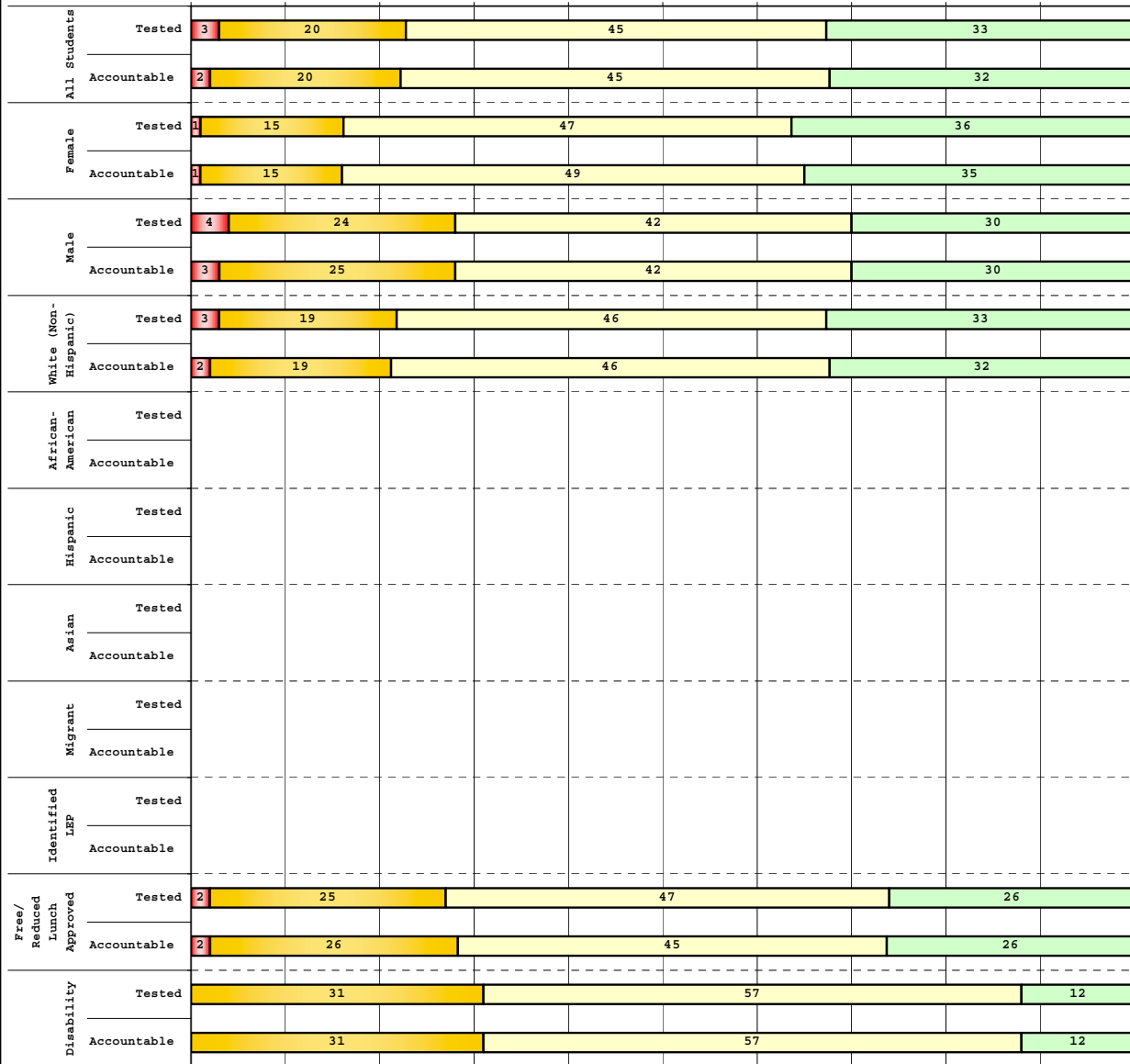
Percentage may not sum to 100% due to rounding. 'Unreportable*' indicates subpopulations with fewer than 10 students or subpopulations where all students score at the same performance level.



2008-2009
INTERIM PERFORMANCE REPORT
MATHEMATICS DISAGGREGATION
Performance Level Percents

School: Lincoln County Middle School
 District: Lincoln County
 Code: 341065
 Grade: 07

0% 10% 20% 30% 40% 50% 60% 70% 80% 90% 100%



Tested Students

	N%	A%	P%	D%	P+D%
Total	3	20	45	33	77.29
Female	1	15	47	36	83.21
Male	4	24	42	30	72.15
White (Non-Hispanic)	3	19	46	33	78.37
African-American	Unreportable*				
Hispanic	Unreportable*				
Asian					
Other	Unreportable*				
Title I					
Migrant					
Identified LEP	Unreportable*				
Extended Sch Services	Unreportable*				
Gifted/Talented	0	3	30	67	96.97
F/R Lunch Approved	2	25	47	26	73.10
Vocational/2 Credits					
Disability	0	31	57	12	68.63
Alternate Assessment	Unreportable*				

NCLB Accountable Students

	N%	A%	P%	D%	P+D%
Total	2	20	45	32	77.21
Female	1	15	49	35	83.33
Male	3	25	42	30	71.79
White (Non-Hispanic)	2	19	46	32	78.29
African-American	Unreportable*				
Hispanic	Unreportable*				
Asian					
Other	Unreportable*				
Title I					
Migrant					
Identified LEP	Unreportable*				
Extended Sch Services	Unreportable*				
Gifted/Talented	0	3	30	67	96.97
F/R Lunch Approved	2	26	45	26	71.76
Vocational/2 Credits					
Disability	0	31	57	12	69.39
Alternate Assessment	Unreportable*				

■ Novice
■ Apprentice
■ Proficient
■ Distinguished

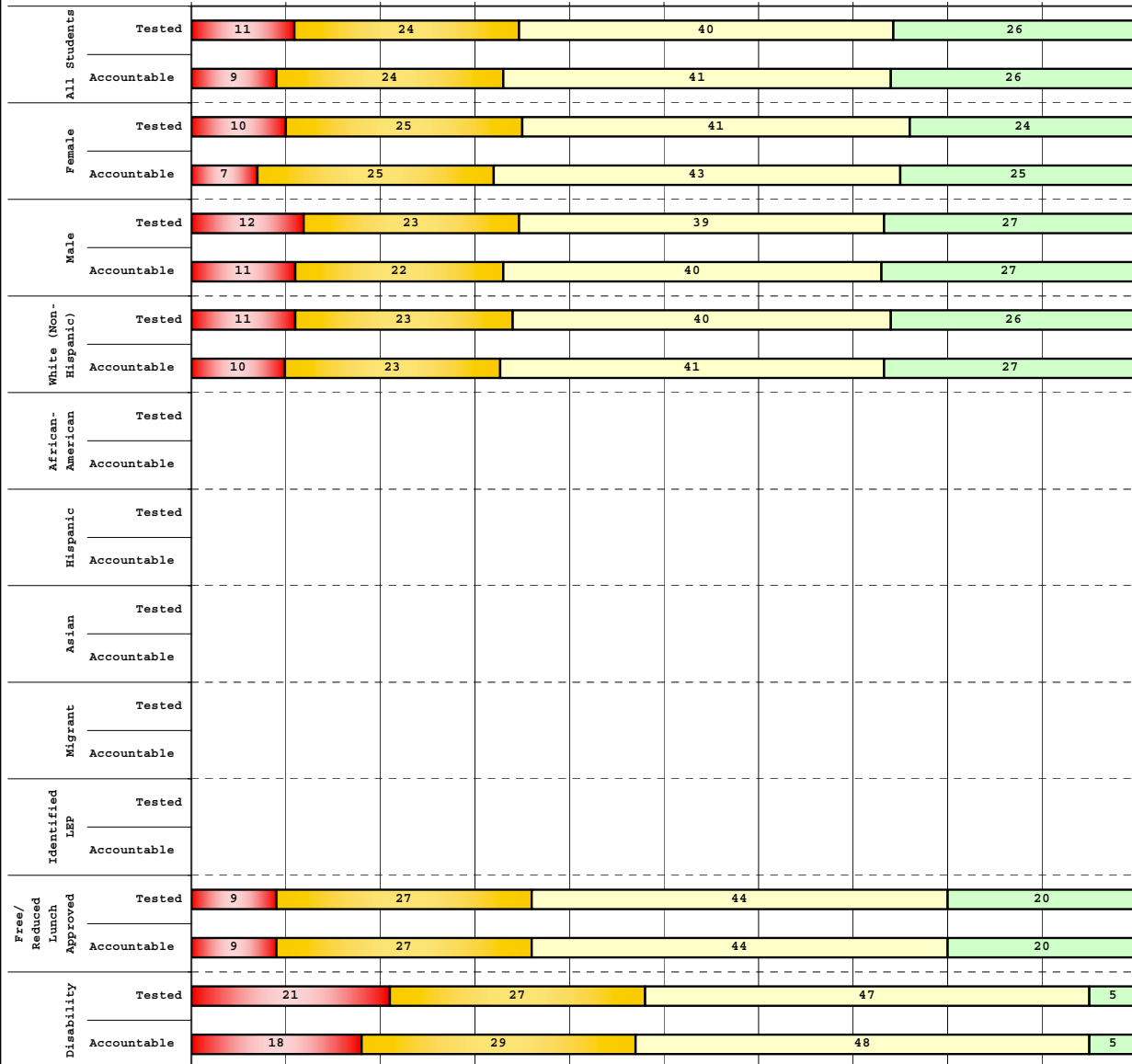
Percentage may not sum to 100% due to rounding. 'Unreportable*' indicates subpopulations with fewer than 10 students or subpopulations where all students score at the same performance level.



2008-2009
INTERIM PERFORMANCE REPORT
MATHEMATICS DISAGGREGATION
Performance Level Percents

School: Lincoln County Middle School
 District: Lincoln County
 Code: 341065
 Grade: 08

0% 10% 20% 30% 40% 50% 60% 70% 80% 90% 100%

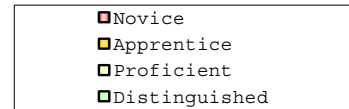


Tested Students

	N%	A%	P%	D%	P+D%
Total	11	24	40	26	65.63
Female	10	25	41	24	65.38
Male	12	23	39	27	65.85
White (Non-Hispanic)	11	23	40	26	65.91
African-American	Unreportable*				
Hispanic	Unreportable*				
Asian					
Other	Unreportable*				
Title I					
Migrant	Unreportable*				
Identified LEP	Unreportable*				
Extended Sch Services	Unreportable*				
Gifted/Talented	0	2	26	73	98.48
F/R Lunch Approved	9	27	44	20	63.68
Vocational/2 Credits					
Disability	21	27	47	5	51.61
Alternate Assessment	Unreportable*				

NCLB Accountable Students

	N%	A%	P%	D%	P+D%
Total	9	24	41	26	67.09
Female	7	25	43	25	67.53
Male	11	22	40	27	66.67
White (Non-Hispanic)	10	23	41	27	67.55
African-American	Unreportable*				
Hispanic	Unreportable*				
Asian					
Other	Unreportable*				
Title I					
Migrant	Unreportable*				
Identified LEP	Unreportable*				
Extended Sch Services	Unreportable*				
Gifted/Talented	0	2	26	73	98.48
F/R Lunch Approved	9	27	44	20	64.00
Vocational/2 Credits					
Disability	18	29	48	5	53.57
Alternate Assessment	Unreportable*				



Percentage may not sum to 100% due to rounding. 'Unreportable*' indicates subpopulations with fewer than 10 students or subpopulations where all students score at the same performance level.



2008-2009
INTERIM PERFORMANCE REPORT
MATHEMATICS CORE CONTENT

School: Lincoln County Middle School
 District: Lincoln County
 Code: 341065
 Grade: 06

	No. Items	No. Observations	SCHOOL								STATE								School -State Mean
			Percents						Mean	Std. Err.	Percents						Mean		
			B	0	1	2	3	4					No. Observations	B	0	1		2	3
OPEN RESPONSE																			
1.x.x - Number Prop Oper	3	419	0	11	25	23	31	11	2.0	0.1	63,895	1	8	23	22	29	17	2.2	-0.2
2.x.x - Measurement	1	51	0	20	29	27	22	2	1.6	0.1	7,930	0	22	42	20	12	3	1.3	0.3
3.x.x - Geometry	2	94	0	4	22	27	34	13	2.3	0.1	15,702	0	10	27	22	25	16	2.1	0.2
4.x.x - Data Analysis & Probabilit	1	306	0	10	69	7	12	2	1.3	0.1	47,700	0	22	51	11	13	3	1.2	0.1
5.x.x - Algebraic Thinking	2	354	0	8	19	18	31	24	2.4	0.1	55,573	0	7	16	19	30	28	2.5	-0.1
MULTIPLE CHOICE																			
1.x.x - Number Prop Oper	30	4,078	Correct	Incorrect	Omit/Mult				0.59	0.01	635,879	Correct	Incorrect	Omit/Mult				0.57	0.02
2.x.x - Measurement	7	867	63	37	0				0.63	0.02	135,170	57	43	0				0.57	0.06
3.x.x - Geometry	14	1,740	70	30	0				0.70	0.01	270,482	65	35	0				0.65	0.05
4.x.x - Data Analysis & Probabilit	11	1,575	61	39	0				0.61	0.01	246,353	61	39	0				0.61	0.00
5.x.x - Algebraic Thinking	11	1,581	66	35	0				0.66	0.01	246,365	67	33	0				0.67	-0.01



2008-2009
INTERIM PERFORMANCE REPORT
MATHEMATICS CORE CONTENT

School: Lincoln County Middle School
 District: Lincoln County
 Code: 341065
 Grade: 07

	No. Items	No. Observations	SCHOOL								Std. Err.	No. Observations	STATE								School -State Mean
			B	0	1	2	3	4	Mean	B			0	1	2	3	4	Mean			
OPEN RESPONSE																					
1.x.x - Number Prop Oper	3	392	0	13	12	22	21	32	2.5	0.1	64,573	0	21	14	18	18	29	2.2	0.3		
2.x.x - Measurement	1	47	0	19	17	45	11	9	1.7	0.2	7,965	0	30	21	36	9	3	1.3	0.4		
3.x.x - Geometry	2	93	0	4	24	45	15	12	2.1	0.1	15,881	0	10	40	31	13	7	1.7	0.4		
4.x.x - Data Analysis & Probabilit	1	293	0	1	14	9	48	28	2.9	0.1	48,171	0	9	22	11	36	21	2.4	0.5		
5.x.x - Algebraic Thinking	2	347	0	2	12	12	31	44	3.0	0.1	56,094	0	7	10	14	25	44	2.9	0.1		
MULTIPLE CHOICE																					
1.x.x - Number Prop Oper	22	2,790	Correct	Incorrect	Omit/Mult				0.68	0.01	457,911	Correct	Incorrect	Omit/Mult				0.64	0.04		
2.x.x - Measurement	10	1,465	68	32	0				0.69	0.01	240,855	64	36	0				0.64	0.05		
3.x.x - Geometry	14	1,898	69	31	0				0.72	0.01	312,825	64	36	0				0.64	0.08		
4.x.x - Data Analysis & Probabilit	13	1,618	72	28	0				0.78	0.01	265,214	64	36	0				0.66	0.12		
5.x.x - Algebraic Thinking	14	1,652	78	22	0				0.68	0.01	272,632	67	33	0				0.61	0.07		



2008-2009
INTERIM PERFORMANCE REPORT
MATHEMATICS CORE CONTENT

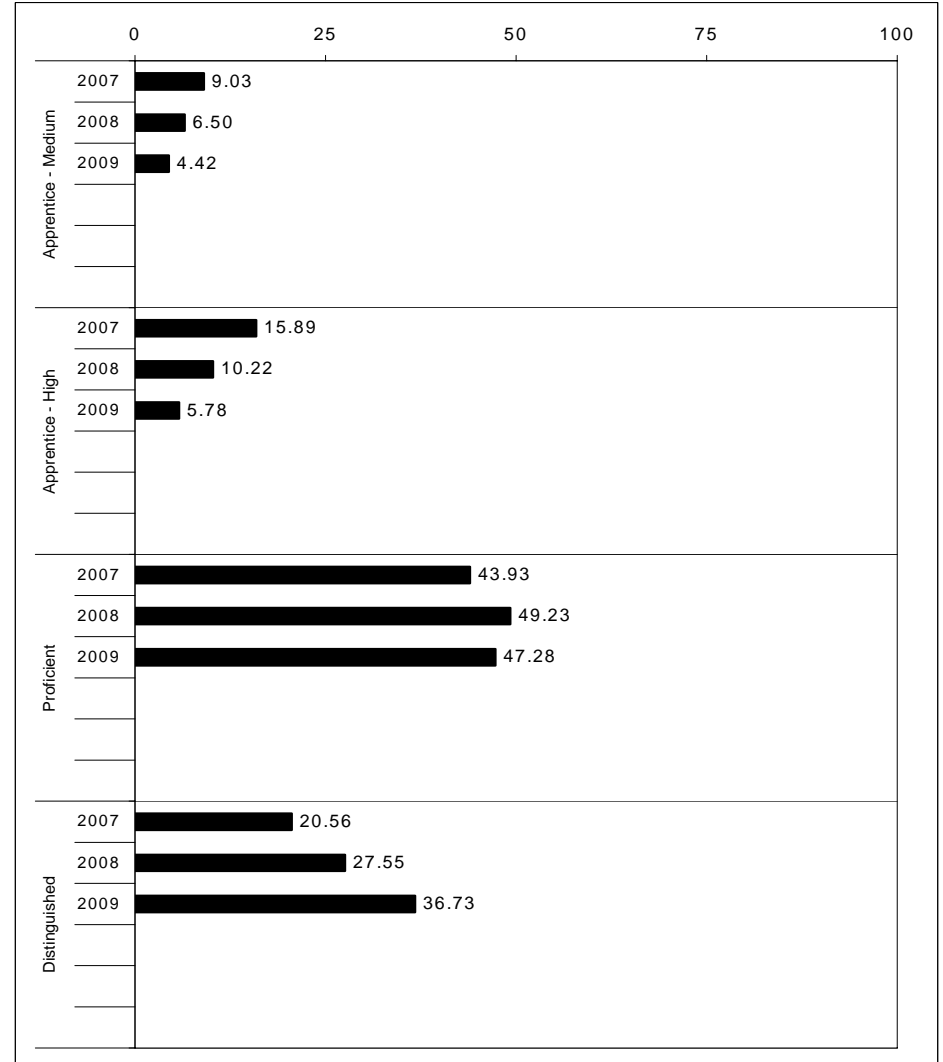
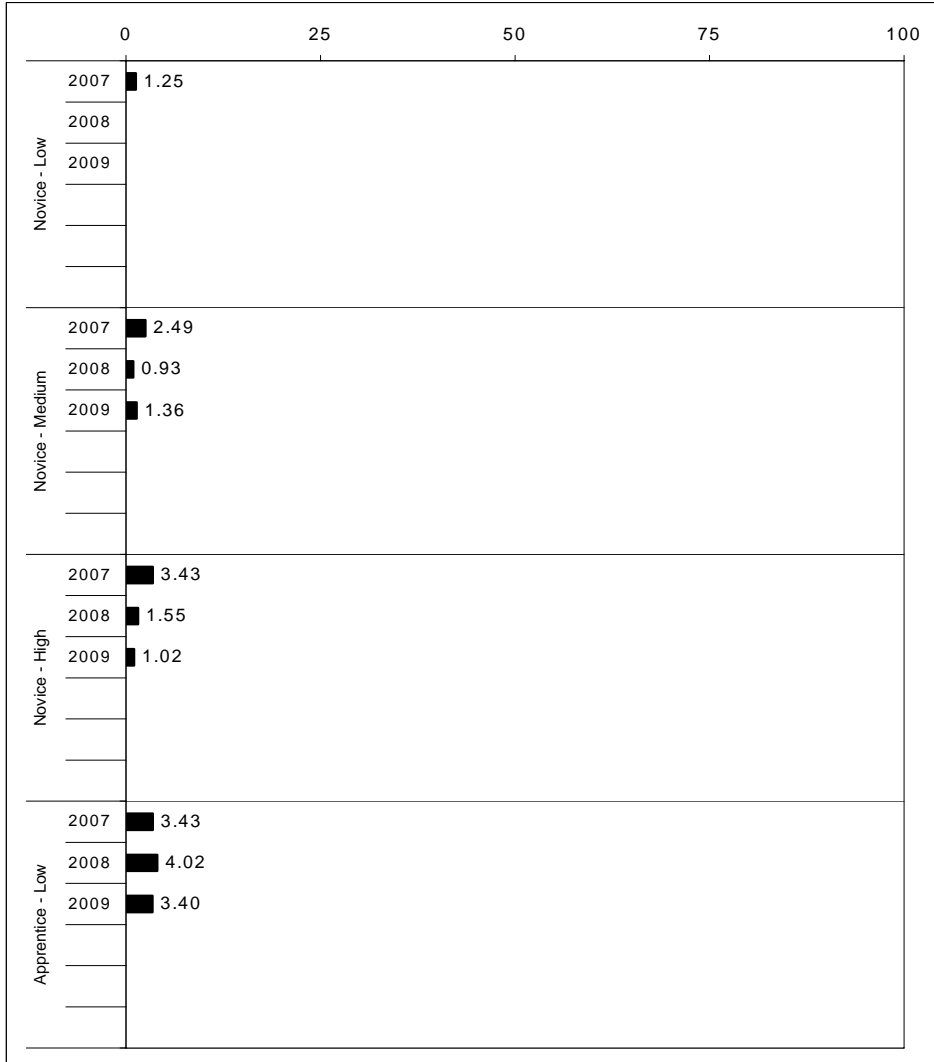
School: Lincoln County Middle School
 District: Lincoln County
 Code: 341065
 Grade: 08

	No. Items	No. Observations	SCHOOL								Std. Err.	No. Observations	STATE								School -State Mean
			B	0	1	2	3	4	Mean	B			0	1	2	3	4	Mean			
OPEN RESPONSE																					
1.x.x - Number Prop Oper	3	156	1	15	30	31	14	9	1.7	0.1	24,020	0	17	30	33	13	6	1.6	0.1		
2.x.x - Measurement	2	104	0	4	48	23	13	12	1.8	0.1	16,041	0	18	41	18	12	10	1.5	0.3		
3.x.x - Geometry	3	413	1	13	16	20	18	31	2.4	0.1	64,613	0	22	18	31	16	13	1.8	0.6		
4.x.x - Data Analysis & Probabilit	1	309	0	8	30	29	15	18	2.1	0.1	48,554	1	12	37	22	11	17	1.8	0.3		
5.x.x - Algebraic Thinking	5	514	0	5	18	24	20	32	2.6	0.1	81,049	0	12	17	23	19	28	2.3	0.3		
MULTIPLE CHOICE																					
1.x.x - Number Prop Oper	16	2,109	70	30	0				0.70	0.01	331,869	64	35	0				0.64	0.06		
2.x.x - Measurement	12	1,648	64	36	0				0.64	0.01	259,272	60	40	0				0.60	0.04		
3.x.x - Geometry	16	2,109	71	29	0				0.71	0.01	331,869	66	34	0				0.66	0.05		
4.x.x - Data Analysis & Probabilit	10	1,545	76	24	0				0.76	0.01	242,770	65	35	0				0.65	0.11		
5.x.x - Algebraic Thinking	20	2,835	65	35	0				0.65	0.01	444,995	63	37	0				0.63	0.02		



2008-2009
INTERIM PERFORMANCE REPORT
SCIENCE TREND DATA
Performance Level Percents

School: Lincoln County Middle School
 District: Lincoln County
 Code: 341065
 Grade: 07



The horizontal bar represents the percent of students scoring at a performance level within a particular year. Percentages may not sum to 100% due to rounding.



**2008-2009
INTERIM PERFORMANCE REPORT
SCIENCE DISAGGREGATION
Performance Level Percents**

School: Lincoln County Middle School
District: Lincoln County
Code: 341065
Grade: 07

		0%	10%	20%	30%	40%	50%	60%	70%	80%	90%	100%	N%	A%	P%	D%	P+D%	
All Students	Tested	2	15	47						36			Tested Students					
	100 Days	2	14	47						37			Total	2	15	47	36	83.05
Female	Tested	1	13	47						38			Female	1	13	47	38	85.40
	100 Days	1	12	48						38			Male	3	16	46	35	81.01
Male	Tested	3	16	46						35			White (Non-Hispanic)	2	14	47	37	83.69
	100 Days	3	15	47						35			African-American	Unreportable*				
White (Non-Hispanic)	Tested	2	14	47						37			Hispanic	Unreportable*				
	100 Days	2	14	47						37			Asian					
African-American	Tested												Other	Unreportable*				
	100 Days												Title I					
Hispanic	Tested												Migrant					
	100 Days												Identified LEP	Unreportable*				
Asian	Tested												Extended Sch Services	Unreportable*				
	100 Days												Gifted/Talented	0	0	29	71	100.00
Migrant	Tested												F/R Lunch Approved	2	18	51	29	80.12
	100 Days												Vocational/2 Credits					
Identified LEP	Tested												Disability	0	20	61	20	80.39
	100 Days												Alternate Assessment	Unreportable*				
Free/Reduced Lunch Approved	Tested	2	18	51						29			100 Day Students					
	100 Days	2	16	52						29			Total	2	14	47	37	84.01
Disability	Tested		20	61						20			Female	1	12	48	38	86.23
	100 Days		16	63						20			Male	3	15	47	35	82.05

■	Novice
■	Apprentice
■	Proficient
■	Distinguished

Percentage may not sum to 100% due to rounding. 'Unreportable*' indicates subpopulations with fewer than 10 students or subpopulations where all students score at the same performance level.



2008-2009
INTERIM PERFORMANCE REPORT
SCIENCE CORE CONTENT

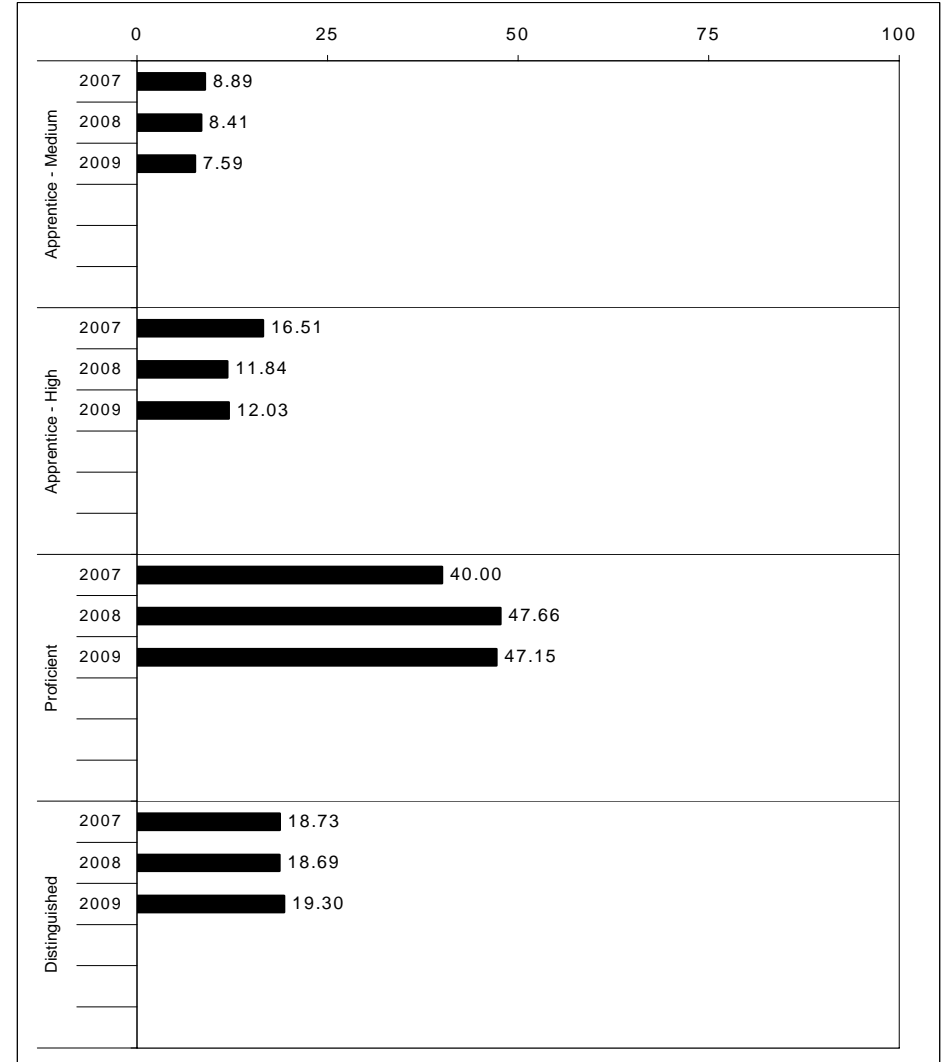
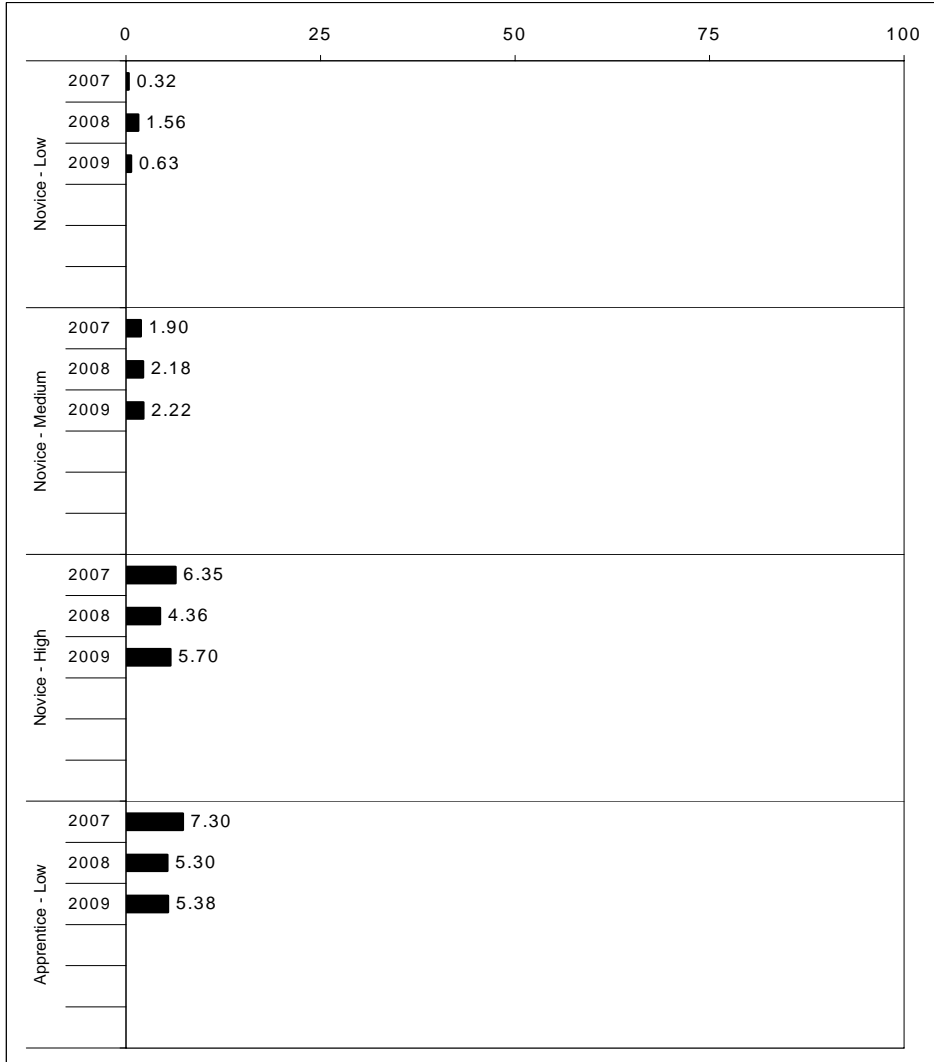
School: Lincoln County Middle School
 District: Lincoln County
 Code: 341065
 Grade: 07

	No. Items	No. Observations	SCHOOL								STATE								School -State Mean
			Percents						Mean	Std. Err.	Percents						Mean		
			B	0	1	2	3	4					No. Observations	B	0	1		2	3
OPEN RESPONSE																			
1.x.x - Physical Science	3	392	0	6	31	42	13	8	1.9	0.1	64,573	0	9	39	35	10	7	1.7	0.2
2.x.x - Earth Space Science	2	347	0	2	9	36	32	22	2.6	0.1	56,094	0	10	18	39	25	9	2.0	0.6
3.x.x - Biological Science	1	46	0	43	15	24	13	4	1.2	0.2	7,903	0	42	24	13	15	5	1.2	0.0
4.x.x - Unifying Concepts	3	387	0	2	18	34	28	18	2.4	0.1	64,114	0	6	31	38	17	8	1.9	0.5
MULTIPLE CHOICE																			
			Correct	Incorrect	Omit/Mult							Correct	Incorrect	Omit/Mult					
1.x.x - Physical Science	19	2,393	72	28	0				0.72	0.01	392,832	62	38	0				0.62	0.10
2.x.x - Earth Space Science	19	2,645	65	35	0				0.65	0.01	433,559	57	43	0				0.57	0.08
3.x.x - Biological Science	14	1,897	77	23	0				0.77	0.01	312,798	66	34	0				0.66	0.11
4.x.x - Unifying Concepts	23	2,835	68	32	0				0.68	0.01	466,354	58	42	0				0.58	0.10



2008-2009
INTERIM PERFORMANCE REPORT
SOCIAL STUDIES TREND DATA
Performance Level Percents

School: Lincoln County Middle School
 District: Lincoln County
 Code: 341065
 Grade: 08

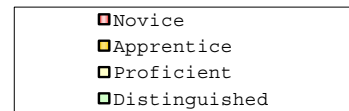
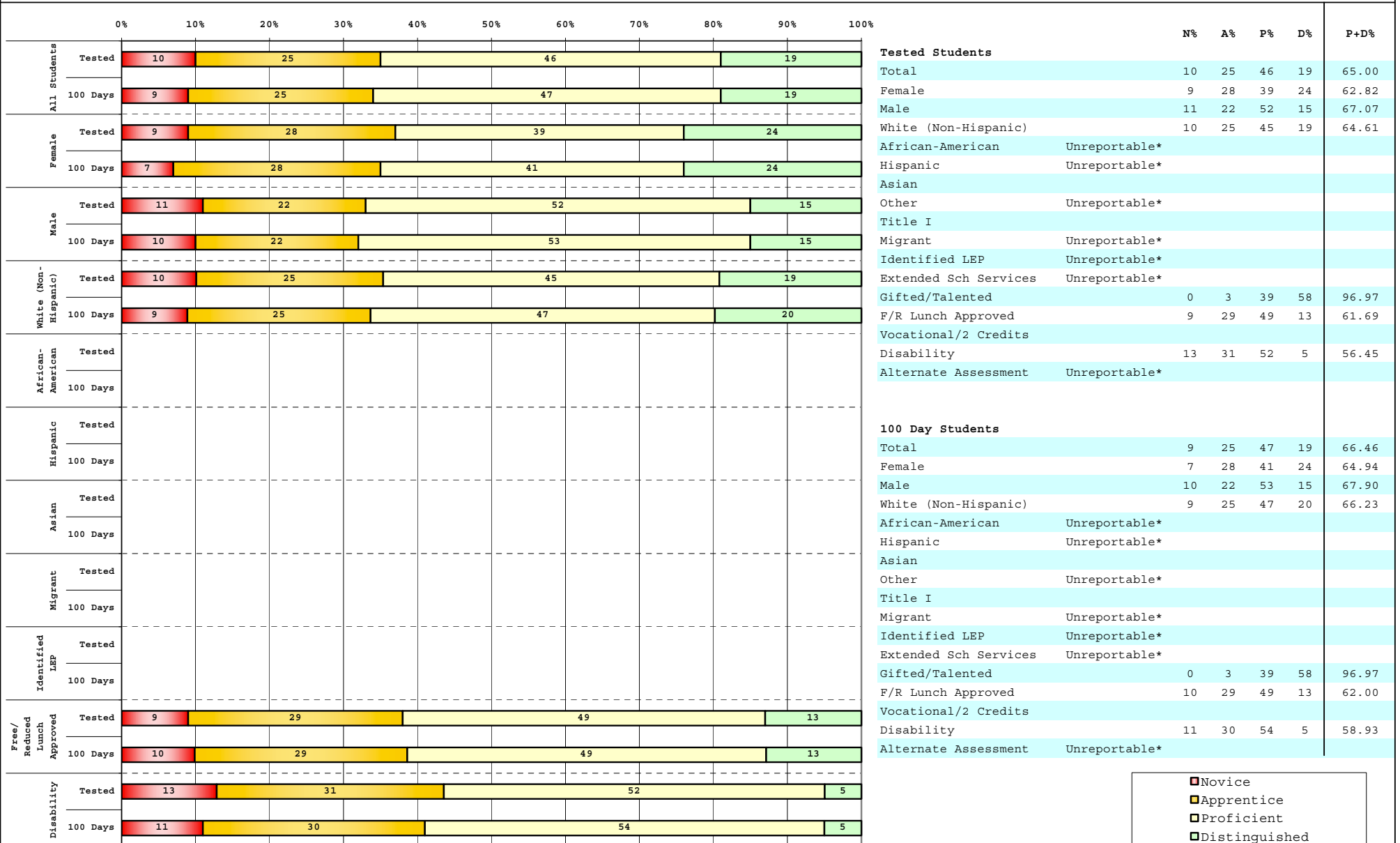


The horizontal bar represents the percent of students scoring at a performance level within a particular year. Percentages may not sum to 100% due to rounding.



2008-2009
INTERIM PERFORMANCE REPORT
SOCIAL STUDIES DISAGGREGATION
Performance Level Percents

School: Lincoln County Middle School
 District: Lincoln County
 Code: 341065
 Grade: 08



Percentage may not sum to 100% due to rounding. 'Unreportable*' indicates subpopulations with fewer than 10 students or subpopulations where all students score at the same performance level.



2008-2009
INTERIM PERFORMANCE REPORT
SOCIAL STUDIES CORE CONTENT

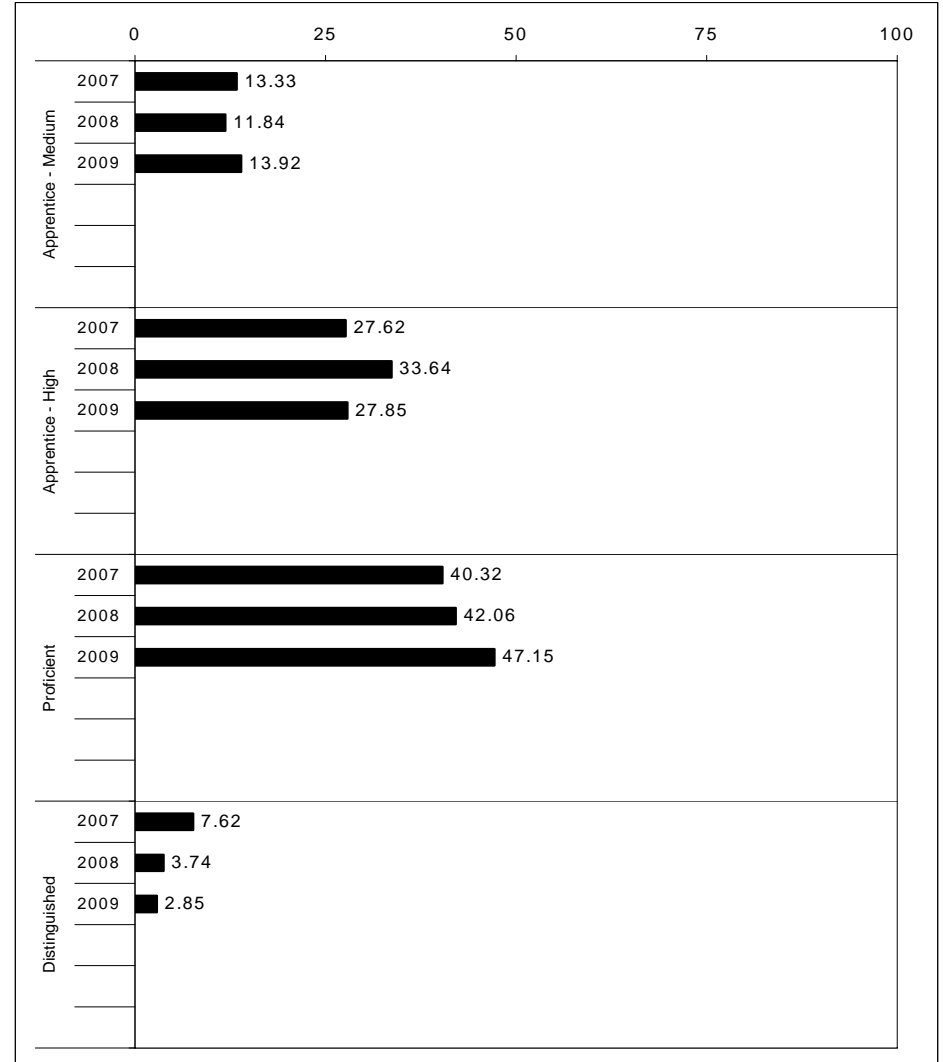
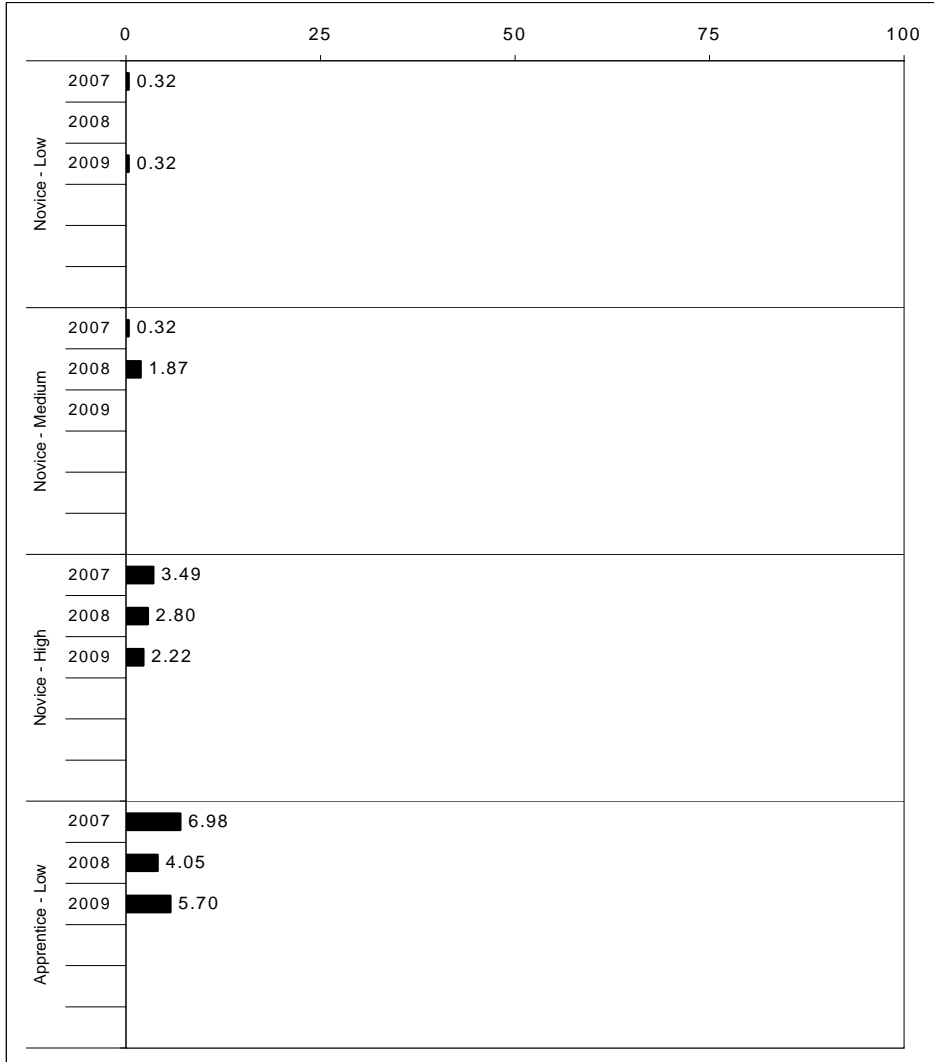
School: Lincoln County Middle School
 District: Lincoln County
 Code: 341065
 Grade: 08

	No. Items	No. Observations	SCHOOL							Mean	Std. Err.	No. Observations	STATE							Mean	School -State Mean
			B	0	1	2	3	4	B				0	1	2	3	4				
OPEN RESPONSE																					
1.x.x - Government & Civics	3	409	0	3	21	50	21	3	2.0	0.0	65,041	0	5	21	49	22	3	2.0	0.0		
2.x.x - Cultures & Societies	1	309	0	2	12	58	20	8	2.2	0.0	48,554	0	4	12	54	24	7	2.2	0.0		
3.x.x - Economics	1	51	0	2	14	57	25	2	2.1	0.1	8,018	0	4	18	55	19	4	2.0	0.1		
4.x.x - Geography	1	51	0	4	33	47	14	2	1.8	0.1	7,999	0	5	32	48	13	3	1.8	0.0		
5.x.x - Historical Perspective	3	416	0	1	20	63	15	1	2.0	0.0	64,604	0	4	25	53	15	2	1.9	0.1		
MULTIPLE CHOICE																					
1.x.x - Government & Civics	21	2,883	69	31	Omit/Mult			0	0.69	0.01	453,520	62	38	Omit/Mult			0	0.62	0.07		
2.x.x - Cultures & Societies	9	979	71	29	Omit/Mult			0	0.71	0.01	153,629	70	29	Omit/Mult			0	0.70	0.01		
3.x.x - Economics	8	1,187	72	28	Omit/Mult			0	0.72	0.01	185,723	65	35	Omit/Mult			0	0.65	0.07		
4.x.x - Geography	11	1,596	77	23	Omit/Mult			0	0.77	0.01	250,788	70	29	Omit/Mult			0	0.70	0.07		
5.x.x - Historical Perspective	30	4,119	69	31	Omit/Mult			0	0.69	0.01	647,195	64	36	Omit/Mult			0	0.64	0.05		



2008-2009
INTERIM PERFORMANCE REPORT
WRITING ON-DEMAND TREND DATA
Performance Level Percents

School: Lincoln County Middle School
 District: Lincoln County
 Code: 341065
 Grade: 08

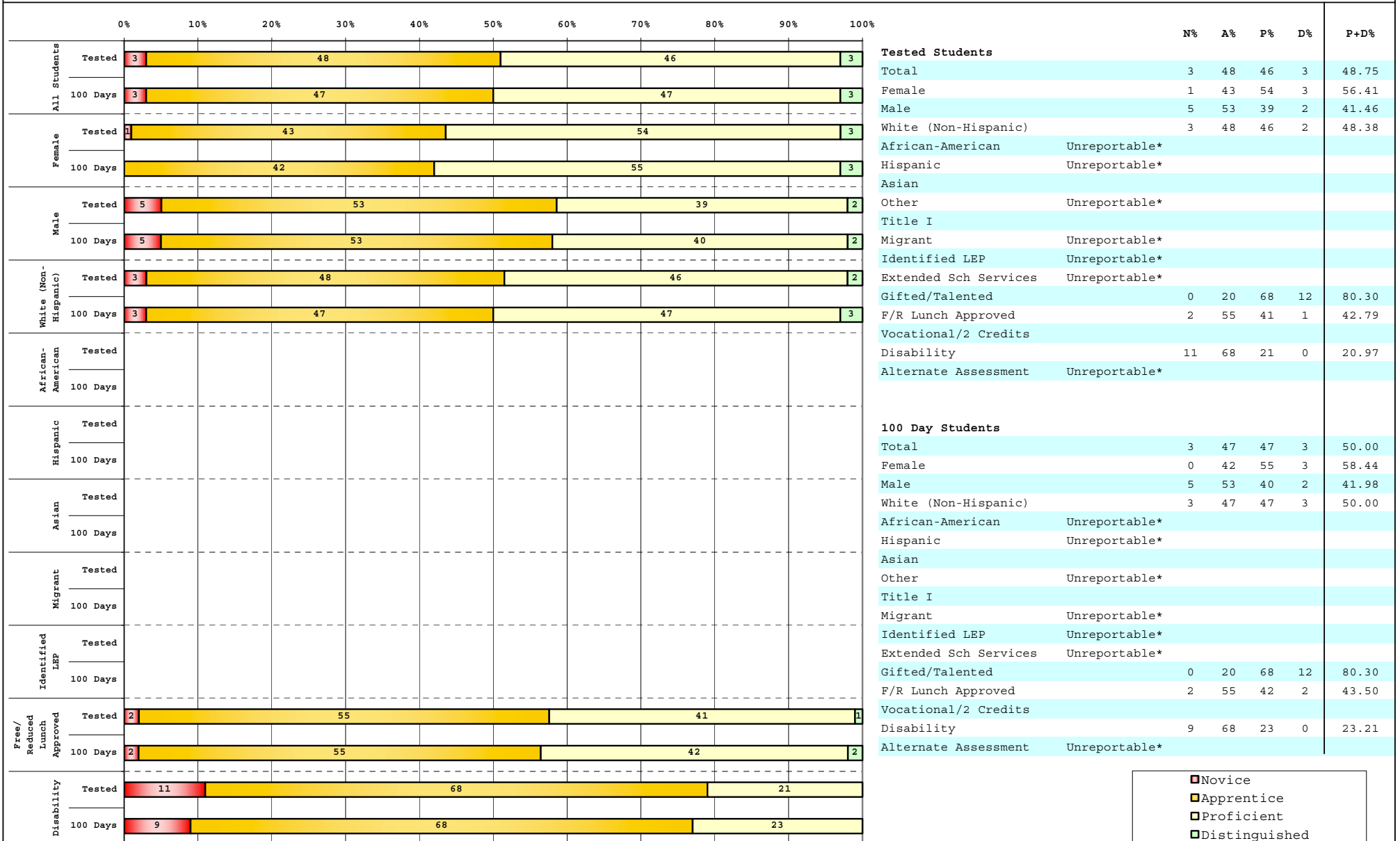


The horizontal bar represents the percent of students scoring at a performance level within a particular year. Percentages may not sum to 100% due to rounding.



2008-2009
INTERIM PERFORMANCE REPORT
WRITING ON-DEMAND DISAGGREGATION
Performance Level Percents

School: Lincoln County Middle School
 District: Lincoln County
 Code: 341065
 Grade: 08



■ Novice
■ Apprentice
■ Proficient
■ Distinguished

Percentage may not sum to 100% due to rounding. 'Unreportable*' indicates subpopulations with fewer than 10 students or subpopulations where all students score at the same performance level.



2008-2009
INTERIM PERFORMANCE REPORT
WRITING ON-DEMAND CORE CONTENT

School: Lincoln County Middle School
 District: Lincoln County
 Code: 341065
 Grade: 08

WRITING PROMPT	SCHOOL												STATE												School -State Mean
	No. Observations	Percents											Mean	Percents											
	B	0	1	2	3	4	5	6	7	8	Mean	B	0	1	2	3	4	5	6	7	8	Mean			
Inform																									
1.X.X - Content	105	0	0	0	6	8	42	22	16	6	1	4.56	1	3	3	13	12	34	16	15	3	1	4.01	0.55	
2.X.X - Structure	105	0	0	1	7	7	41	25	18	1	1	4.45	1	3	3	13	13	34	16	14	3	1	3.90	0.55	
3.X.X - Convention	105	0	0	0	10	8	38	25	18	1	1	4.41	1	0	0	19	13	34	16	14	3	1	4.01	0.40	
Narrate for a purpose																									
1.X.X - Content	104	0	0	2	3	8	39	18	23	4	3	4.68	1	3	3	13	12	31	16	16	3	1	3.98	0.70	
2.X.X - Structure	104	0	0	2	3	10	39	18	22	4	2	4.61	1	4	4	13	13	32	15	14	3	1	3.83	0.78	
3.X.X - Convention	104	0	0	0	6	11	38	17	23	4	2	4.61	1	0	0	21	13	32	15	14	3	1	3.97	0.64	
Persuade																									
1.X.X - Content	100	1	2	2	6	7	41	20	17	4	0	4.29	1	4	4	13	12	32	16	15	3	1	3.91	0.38	
2.X.X - Structure	100	1	2	2	7	10	42	16	17	3	0	4.17	1	5	4	13	13	32	15	13	2	1	3.78	0.39	
3.X.X - Convention	100	1	0	0	13	11	38	19	16	2	0	4.16	1	0	0	21	14	32	16	13	2	1	3.93	0.23	

MULTIPLE CHOICE	No. Items	SCHOOL						STATE						School -State Mean
		No. Observations	Percents			Mean	Std. Err.	No. Observations	Percents			Mean		
		Correct	Incorrect	Omit/Mult			Observations	Correct	Incorrect	Omit/Mult				
4.x.x - Writing Process	72	3,708	73	27	0	0.73	0.01	582,648	72	28	1	0.72	0.01	
4.10.x - Revising	26	1,341	73	27	0	0.73	0.01	210,736	73	26	1	0.73	0.00	
4.11.x - Editing	46	2,367	73	27	0	0.73	0.01	371,912	71	28	1	0.71	0.02	